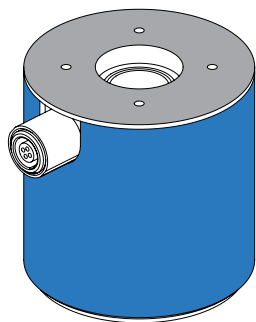
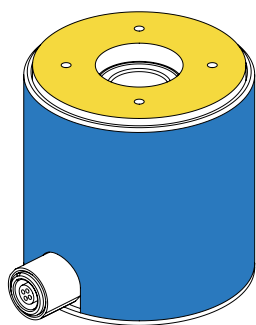




FEATURES

- Easily integrates into OEM applications
- Designed for Torque auditing
- Aluminum construction
- Built-in overload protection on lower ranges
- Strain gauge based

- Active End
- Fixed End
- Non-loading surface, do not contact



SPECIFICATIONS

PERFORMANCE

Nonlinearity	±0.2% of RO
Hysteresis	±0.2% of RO
Nonrepeatability	±0.05% of RO

ELECTRICAL

Rated Output (RO)	1 mV/V nom (5 in-oz) 2 mV/V nom (10 in-oz to 500 in-lb)
Excitation (VDC or VAC)	18 max
Bridge Resistance	350 Ohm nom (5 to 1000 in-oz) 700 Ohm nom (100 to 500 in-lb)
Connection	4 Pin LEMO® Receptacle (EGG.0B.304.CLL)
Wiring/Connector Code	CC4

MECHANICAL

Weight (approximate)	9 oz [250 g]
Safe Overload	300% (5 to 1000 in-oz) of RO 150% (100 in-lb to 500 in-lb) of RO
Material	Aluminum
IP Rating	IP40

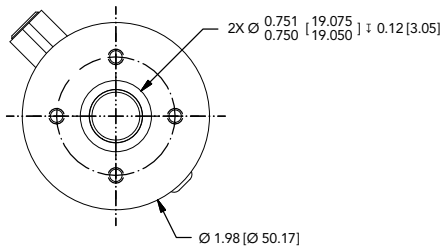
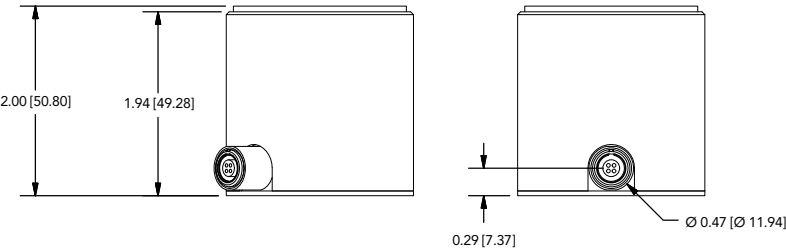
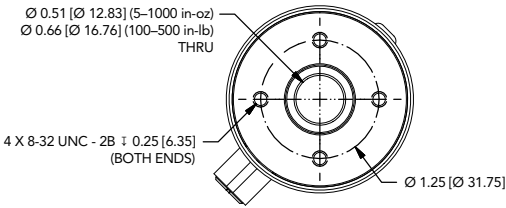
TEMPERATURE

Operating Temperature	-60 to 200°F (-50 to 93°C)
Compensated Temperature	60 to 160°F (15 to 72°C)
Temperature Shift Zero	±0.002% of RO/°F (0.0036% of RO/°C)
Temperature Shift Span	±0.002% of Load/°F (0.0036% of Load/°C)

CALIBRATION

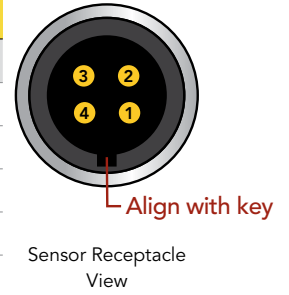
Calibration Test Excitation	10 VDC
Calibration (standard)	5-pt CW
Calibration (available)	5-pt CW & CCW
Shunt Calibration Value	60.4 kOhm (10 to 1000 in-oz) 100 kOhm (5 in-oz, 100 to 500 in-lb)

DIMENSIONS inches [mm]



LEMO 4-PIN

PIN	COLOR	DESCRIPTION
1	Red	+ Excitation
2	Green	+ Signal
3	White	- Signal
4	Black	- Excitation



CAPACITIES

ITEM #	in-oz	Nm	Torsional Stiffness in-oz/rad	Natural Frequency (Hz)
FSH03981	5*	0.04	510	95
FSH03982	10*	0.07	510	95
FSH03984	50*	0.35	4200	260
FSH03985	160*	1.1	23000	504
FSH03986	400*	2.8	68300	860
FSH03987	1000*	7.1	232000	1590
FSH04015	100 in-lb	11	40000 in-lb/rad	2990
FSH04016	200 in-lb	22	67000 in-lb/rad	3860
FSH04017	500 in-lb	56	133000 in-lb/rad	5400

*With overload protection.

For high capacities refer to models TFF600 and TDF600-675.

Drawing Number: F11457

FUTEK reserves the right to modify its design and specifications without notice. Please visit <http://www.futek.com/salesterms> for complete terms and conditions.

10 Thomas, Irvine, CA 92618 USA

Tel: (949) 465-0900

Fax: (949) 465-0905

www.futek.com



RoHS



U.S. Manufacturer