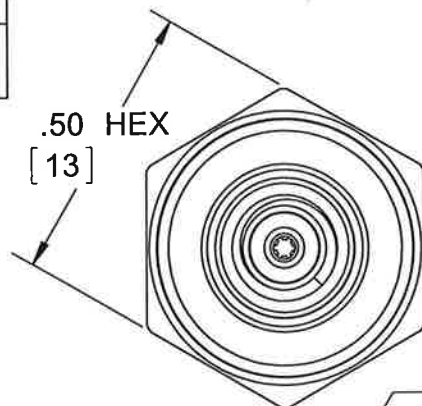


PROPRIETARY AND CONFIDENTIAL

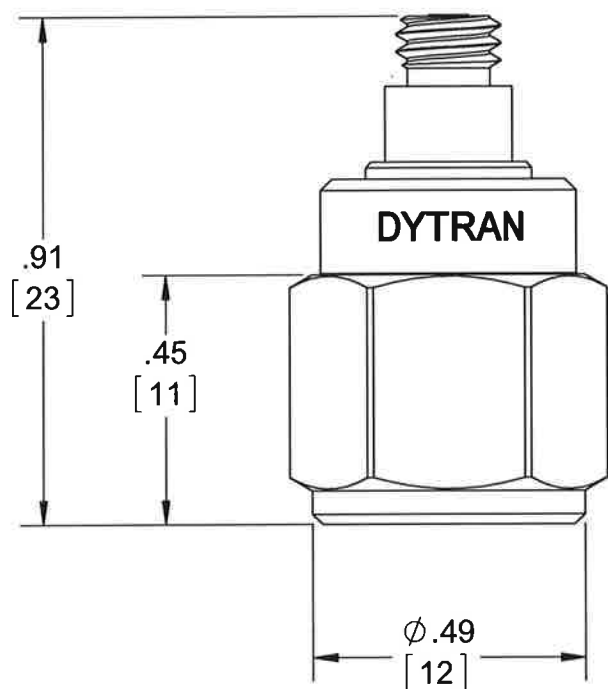
THE INFORMATION CONTAINED IN THIS DRAWING IS THE SOLE PROPERTY OF DYTRAN INSTRUMENTS INC. ANY REPRODUCTION IN PART OR AS A WHOLE WITHOUT THE WRITTEN PERMISSION OF DYTRAN INSTRUMENTS INC. IS PROHIBITED

REVISIONS

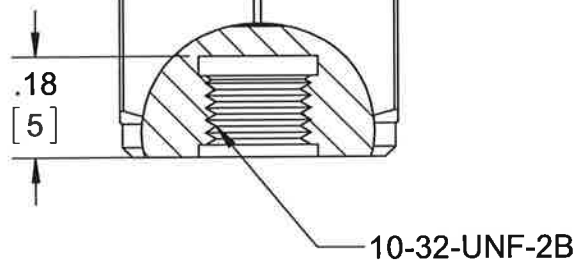
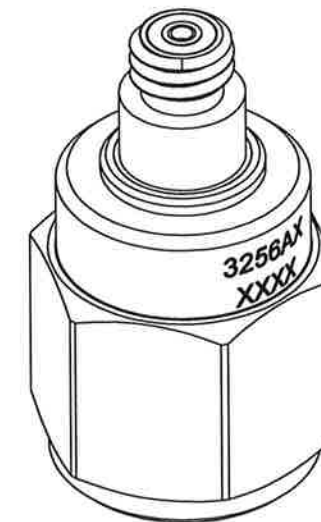
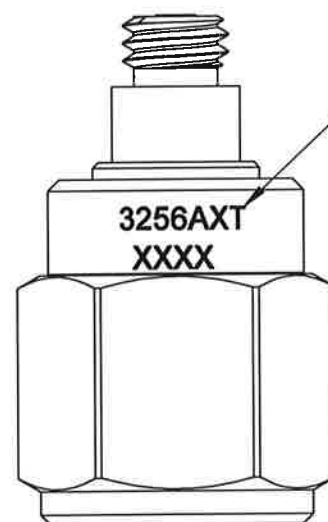
| REV. | ECN   | DESCRIPTION                        | BY/DATE         | CHK | APPR |
|------|-------|------------------------------------|-----------------|-----|------|
| A    | 4932  | INITIAL RELEASE                    | JS<br>11/27/07  | RA  | CES  |
| B    | 11745 | MOVED MARKING FROM HEX TO DIAMETER | NDC<br>02/25/15 | JS  | LN   |
| C    | 11835 | REDESIGNED WITH CHANGES            | RA,<br>05/19/15 | EM  | LN   |



10-32 UNF-2A COAXIAL CONNECTOR



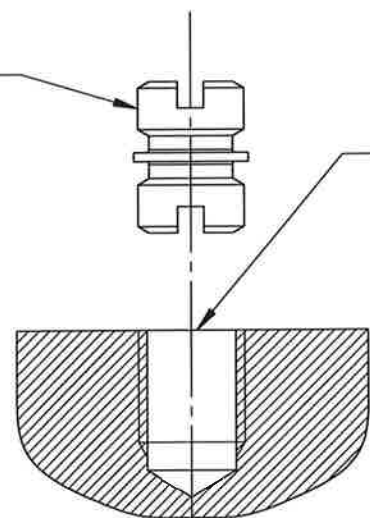
SEE TABULATION



10-32-UNF-2B

10-32 UNF-2A MODEL 6200 MTG STUD PROVIDED

MOUNTING SURFACE HOLE PREPARATION: SELECT SURFACE FLAT TO .001 TIR TAP 10-32 UNF-2B X .200 MIN THD DEPTH



| MODEL   | REV | ECN   | DATE     | SEN mV/G |
|---------|-----|-------|----------|----------|
| 3256A5T | C   | 11835 | 05/29/15 | 50mV/G   |
| 3256A3T | C   | 11835 | 05/19/15 | 500mV/G  |
| 3256A2T | C   | 11835 | 05/19/15 | 100mV/G  |
| 3256A1T | C   | 11835 | 05/19/15 | 10mV/G   |

TABULATION

UNLESS OTHERWISE SPECIFIED:  
 INTERPRET DIM & TOL PER ASME Y14.5M - 1994.  
 REMOVE BURRS.  
 COUNTERSINK INTERNAL THDS 90° TO MAJOR DIA.  
 CHAM EXT THDS 45° TO MINOR DIA.  
 THD LENGTHS AND DEPTHS ARE FOR MIN FULL THDS.  
 DIMENSIONS APPLY AFTER FINISHING.

ALL MACHINED SURFACES.  
 TOTAL RUNOUT WITHIN .005.  
 BREAK SHARP EDGES .005 TO .010.  
 MACHINED FILLET RADII .005 TO .015.  
 WELDING SYMBOLS PER AWS A2.4.  
 ABBREVIATIONS PER MIL-STD-12.

| DECIMALS   | METRIC    | ANGLES |
|------------|-----------|--------|
| .XX ±.03   | X ±0.8    | ±1°    |
| .XXX ±.010 | .XX ±0.25 |        |

| APPROVALS | DATE     |
|-----------|----------|
| ORIG JS   | 11/26/07 |
| CHK RA    | 11/26/07 |
| APP CES   | 11/30/07 |

DO NOT SCALE DRAWING

THIRD ANGLE PROJECTION USA

**DYTRAN INSTRUMENTS, INC.** Chatsworth, CA **MASTER**  
 ONLY IF IN RED

TITLE: **OUTLINE/INSTALLATION, MODEL 3256AXT**

|               |                        |                          |              |
|---------------|------------------------|--------------------------|--------------|
| SIZE <b>B</b> | CAGE CODE <b>2W033</b> | DWG NO <b>127-3256AT</b> | REV <b>C</b> |
|---------------|------------------------|--------------------------|--------------|

SCALE: 2:1 SHEET 1 OF 1

NOTES: UNLESS OTHERWISE SPECIFIED

Model Number  
3256A5T

## PERFORMANCE SPECIFICATIONS

DOC NO  
PS3256A5T

REV A, ECN 11835, 05/22/15

### IEPE ACCELEROMETER



- HERMETICALLY SEALED
- CASE GROUNDED
- TEDS

#### This family also includes:

| Model   | Sensitivity (mV/g) | Frequency Response (Hz) | Time Constant (Sec) | Operating Temp (°F) |
|---------|--------------------|-------------------------|---------------------|---------------------|
| 3256A1T | 10                 | 1 to 10000              | 0.5 to 1.5          | -60 to +250         |
| 3256A2T | 100                | 1 to 10000              | 0.5 to 1.5          | -60 to +250         |
| 3256A3T | 500                | 1 to 10000              | 0.5 to 1.5          | -60 to +225         |

Refer to the performance specifications of the products in this family for detailed description

#### Supplied Accessories:

- 1) Accredited calibration certificate (ISO 17025)
- 2) 10-32 to 10-32 mounting stud, Model 6200. Qty. 1

#### Notes:

- [1] Measured at 100Hz, 1 Grms per ISA RP 37.2.
- [2] Measured using zero-based straight line method, % of F.S. or any lesser range.
- [3] Do not apply power to this system without current limiting, 20 mA MAX. To do so will destroy the IC charge amplifier.
- [4] In the interest of constant product improvement, we reserve the right to change specifications without notice.

#### PHYSICAL

Weight  
Connector  
Mounting Provision  
Material, Housing/Connector  
Sensing Element  
Element Style

| ENGLISH        |    | SI             |       |
|----------------|----|----------------|-------|
| 0.35           | oz | 10             | grams |
| 10-32          |    | 10-32          |       |
| 10-32 X .150 ↓ |    | 10-32 X .150 ↓ |       |
| Titanium       |    | Titanium       |       |
| Ceramic        |    | Ceramic        |       |
| Planar Shear   |    | Planar Shear   |       |

#### PERFORMANCE

Sensitivity, ±5% [1]  
Range for ± 5 Volts Output  
Frequency Response, ±10%  
Resonant Frequency  
Broad Band Resolution  
Linearity [2]  
Maximum Transverse Sensitivity  
Strain Sensitivity @ 250µε

| ENGLISH     |        | SI          |                      |
|-------------|--------|-------------|----------------------|
| 50          | mV/G   | 5.1         | mV/m/s <sup>2</sup>  |
| 100         | G peak | 981         | m/s <sup>2</sup>     |
| 1 to 10,000 | Hz     | 1 to 10,000 | Hz                   |
| > 36        | kHz    | > 36        | kHz                  |
| 0.0010      | G rms  | 0.0098      | m/s <sup>2</sup> rms |
| ±1          | % F.S. | ±1          | % F.S.               |
| 5           | %      | 5           | %                    |
| 0.001       | G/µε   | 0.01        | m/s <sup>2</sup> /µε |

#### ENVIRONMENTAL

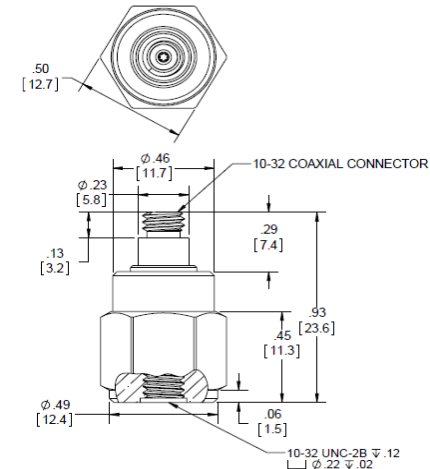
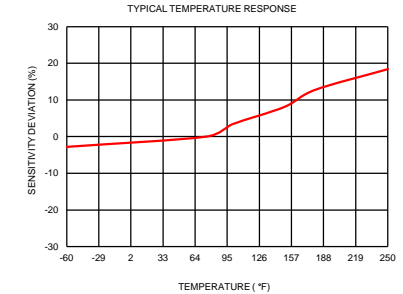
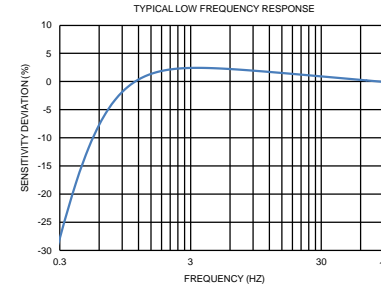
Maximum Vibration  
Maximum Shock  
Operating Temperature Range  
TEDS Operating Temperature  
Seal

| ENGLISH     |        | SI         |                       |
|-------------|--------|------------|-----------------------|
| 500         | G peak | 4905       | m/s <sup>2</sup> peak |
| 3000        | G peak | 29430      | m/s <sup>2</sup> peak |
| -60 to +250 | °F     | -51 to 121 | °C                    |
| -40 to +185 | °F     | -40 to +85 | °C                    |
| HERMETIC    |        | HERMETIC   |                       |

#### ELECTRICAL

Supply Current Range [3]  
Compliance Voltage Range  
Output Impedence, Typ  
Bias Voltage  
Discharge Time Constant  
TEDS

| ENGLISH     |       | SI          |       |
|-------------|-------|-------------|-------|
| 2 to 20     | mA    | 2 to 20     | mA    |
| +18 to +30  | Volts | +18 to +30  | Volts |
| 100         | Ω     | 100         | Ω     |
| +9 to +13   | VDC   | +9 to +13   | VDC   |
| .5 to 1.5   | Sec   | .5 to 1.5   | Sec   |
| IEEE 1451.4 |       | IEEE 1451.4 |       |



Units on the line drawing are in inches, units in brackets are in millimeters. Refer to 127-3256AT for more information.



21592 Marilla Street, Chatsworth, California 91311 Phone: 818.700.7818 Fax: 818.700.7880 www.dytran.com  
For permission to reprint this content, please contact info@dytran.com